



Commercial Land Built to Suit or Lease

NORTH MARKET STREET. NORTH CANTON, OH



Overview

Commercial land available for build to suit or land lease in North Canton near the busy Washington Square shopping center. Washington Square is anchored by Giant Eagle which is consistently ranked as one of the highest grossing and trafficked grocery stores in Stark County. Landlord has completed all site engineering and is prepared to immediately commence construction for qualified tenants.

Contact us for site specific plans and elevations for a QSR, branch banking, restaurant, retail, and more.

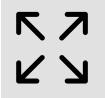
Offering Details



Sale Price
N/A



Lease Rate
Negotiable
NNN



Lot Size
+/- 6.00 Acres



Zoning
B-2 - Commercial
North Canton

Highlights

- 18,369+ AADT Traffic Count
- High visibility
- Shovel ready
- Brokers protected

Jake Miller
O: 614.412.9400
M: 614.256.7385
jmiller@aaltmanco.com

Harrison Zoldan
O: 614.412.9400
hzoldan@aaltmanco.com

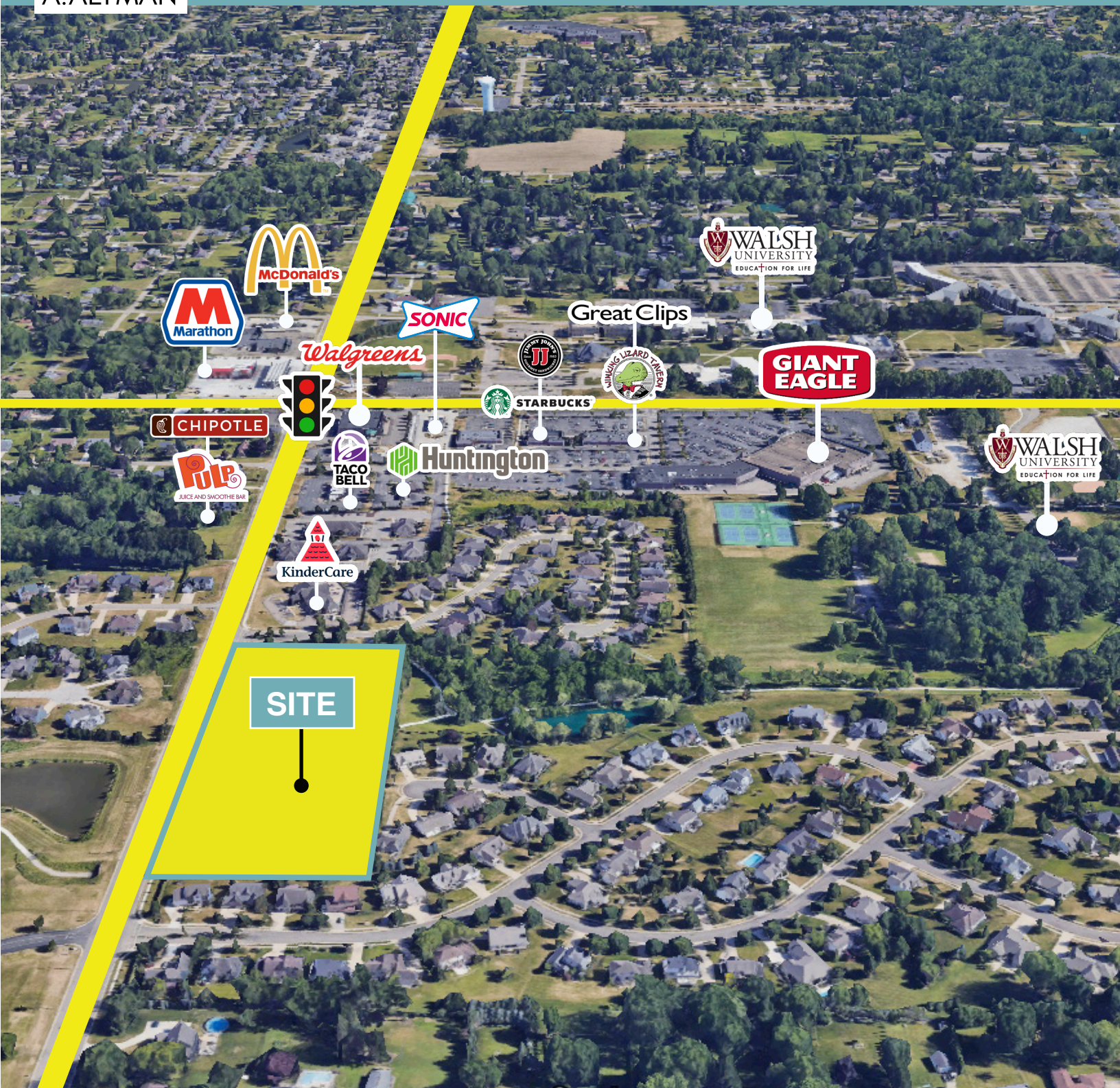
IF YOU ARE SUCCESSFUL, WE ARE SUCCESSFUL™



NO WARRANTY OR REPRESENTATION, EXPRESS OR IMPLIED, IS MADE AS TO THE ACCURACY OF THE INFORMATION CONTAINED HEREIN, AND THE SAME IS SUBMITTED SUBJECT TO ERRORS, OMISSIONS, CHANGE OF PRICE, RENTAL OR OTHER CONDITIONS, PRIOR SALE, LEASE OR FINANCING, OR WITHDRAWAL WITHOUT NOTICE, AND OF ANY SPECIAL LISTING CONDITIONS IMPOSED BY OUR PRINCIPALS NO WARRANTIES OR REPRESENTATIONS ARE MADE AS TO THE CONDITION OF THE PROPERTY OR ANY HAZARDS CONTAINED THEREIN ARE ANY TO BE IMPLIED.

Commercial Land Built to Suit or Lease

NORTH MARKET STREET. NORTH CANTON, OH



Harrison Zoldan

O: 614.412.9400
 hzoldan@aaltmanco.com

IF YOU ARE SUCCESSFUL, WE ARE SUCCESSFUL™



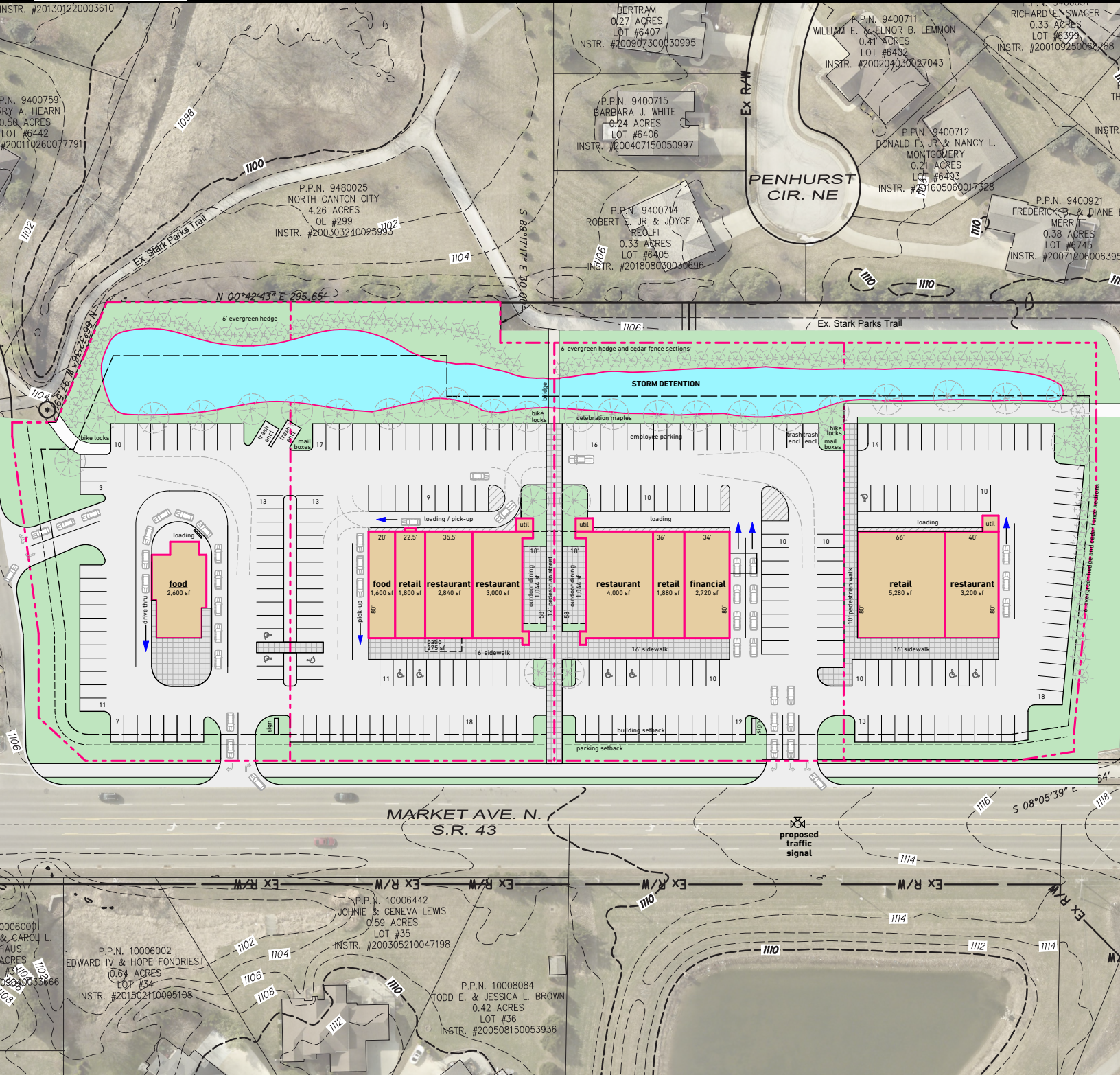
NO WARRANTY OR REPRESENTATION, EXPRESS OR IMPLIED, IS MADE AS TO THE ACCURACY OF THE INFORMATION CONTAINED HEREIN, AND THE SAME IS SUBMITTED SUBJECT TO ERRORS, OMISSIONS, CHANGE OF PRICE, RENTAL OR OTHER CONDITIONS, PRIOR SALE, LEASE OR FINANCING, OR WITHDRAWAL WITHOUT NOTICE, AND OF ANY SPECIAL LISTING CONDITIONS IMPOSED BY OUR PRINCIPALS NO WARRANTIES OR REPRESENTATIONS ARE MADE AS TO THE CONDITION OF THE PROPERTY OR ANY HAZARDS CONTAINED THEREIN ARE ANY TO BE IMPLIED.



A. ALTMAN

Commercial Land Built to Suit or Lease

NORTH MARKET STREET. NORTH CANTON, OH



Jake Miller
 O: 614.412.9400
 M: 614.256.7385
 jmiller@aaltmanco.com

Harrison Zoldan
 O: 614.412.9400
 hzoldan@aaltmanco.com

IF YOU ARE SUCCESSFUL, WE ARE SUCCESSFUL™

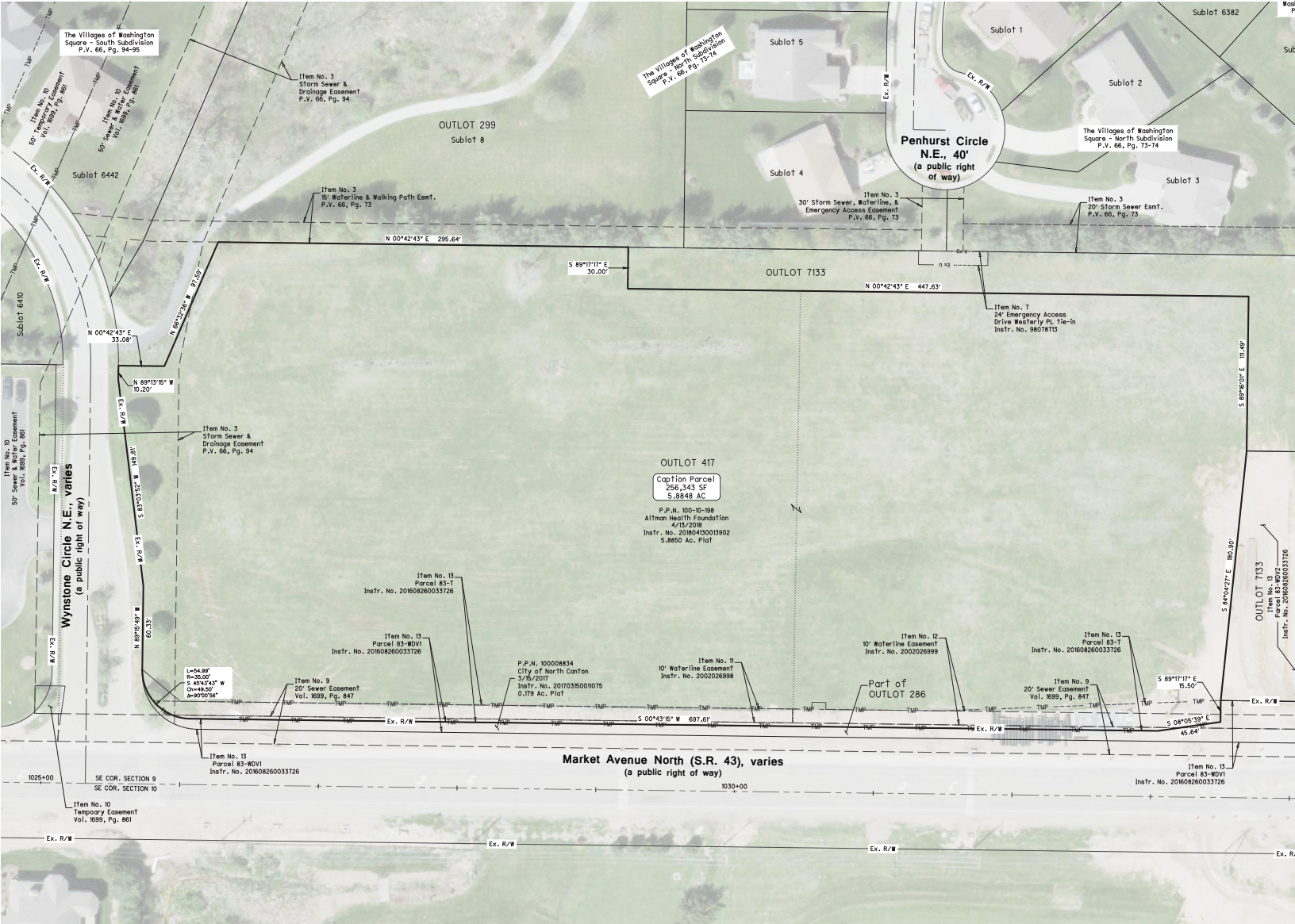
NO WARRANTY OR REPRESENTATION, EXPRESS OR IMPLIED, IS MADE AS TO THE ACCURACY OF THE INFORMATION CONTAINED HEREIN, AND THE SAME IS SUBMITTED SUBJECT TO ERRORS, OMISSIONS, CHANGE OF PRICE, RENTAL OR OTHER CONDITIONS, PRIOR SALE, LEASE OR FINANCING, OR WITHDRAWAL WITHOUT NOTICE, AND OF ANY SPECIAL LISTING CONDITIONS IMPOSED BY OUR PRINCIPALS. NO WARRANTIES OR REPRESENTATIONS ARE MADE AS TO THE CONDITION OF THE PROPERTY OR ANY HAZARDS CONTAINED THEREIN ARE ANY TO BE IMPLIED.





Commercial Land Built to Suit or Lease

NORTH MARKET STREET. NORTH CANTON, OH



<p>Jake Miller O: 614.412.9400 M: 614.256.7385 jmiller@aaltmanco.com</p>	<p>Harrison Zoldan O: 614.412.9400 hzoldan@aaltmanco.com</p>
---	---

IF YOU ARE SUCCESSFUL, WE ARE SUCCESSFUL™

NO WARRANTY OR REPRESENTATION, EXPRESS OR IMPLIED, IS MADE AS TO THE ACCURACY OF THE INFORMATION CONTAINED HEREIN, AND THE SAME IS SUBMITTED SUBJECT TO ERRORS, OMISSIONS, CHANGE OF PRICE, RENTAL OR OTHER CONDITIONS, PRIOR SALE, LEASE OR FINANCING, OR WITHDRAWAL WITHOUT NOTICE, AND OF ANY SPECIAL LISTING CONDITIONS IMPOSED BY OUR PRINCIPALS NO WARRANTIES OR REPRESENTATIONS ARE MADE AS TO THE CONDITION OF THE PROPERTY OR ANY HAZARDS CONTAINED THEREIN ARE ANY TO BE IMPLIED.

A. ALTMAN



Commercial Land Built to Suit or Lease

NORTH MARKET STREET. NORTH CANTON, OH



Jake Miller
O: 614.412.9400
M: 614.256.7385
jmiller@aaltmanco.com

Harrison Zoldan
O: 614.412.9400
hzoldan@aaltmanco.com

IF YOU ARE SUCCESSFUL, WE ARE SUCCESSFUL™

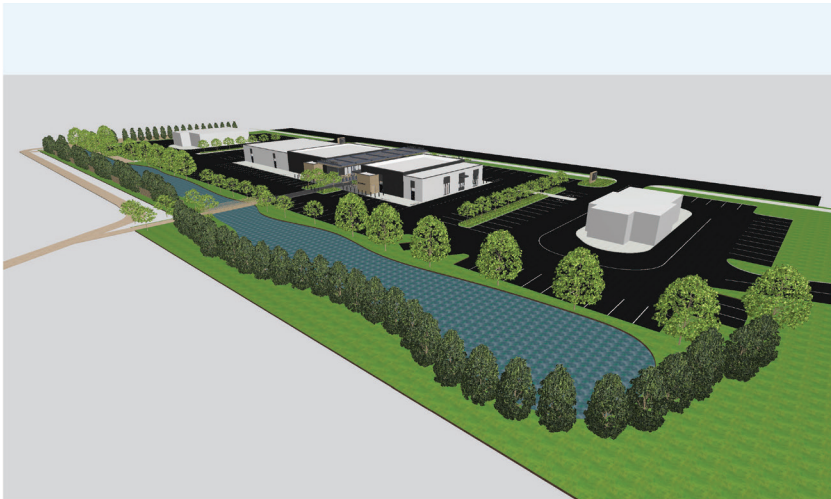
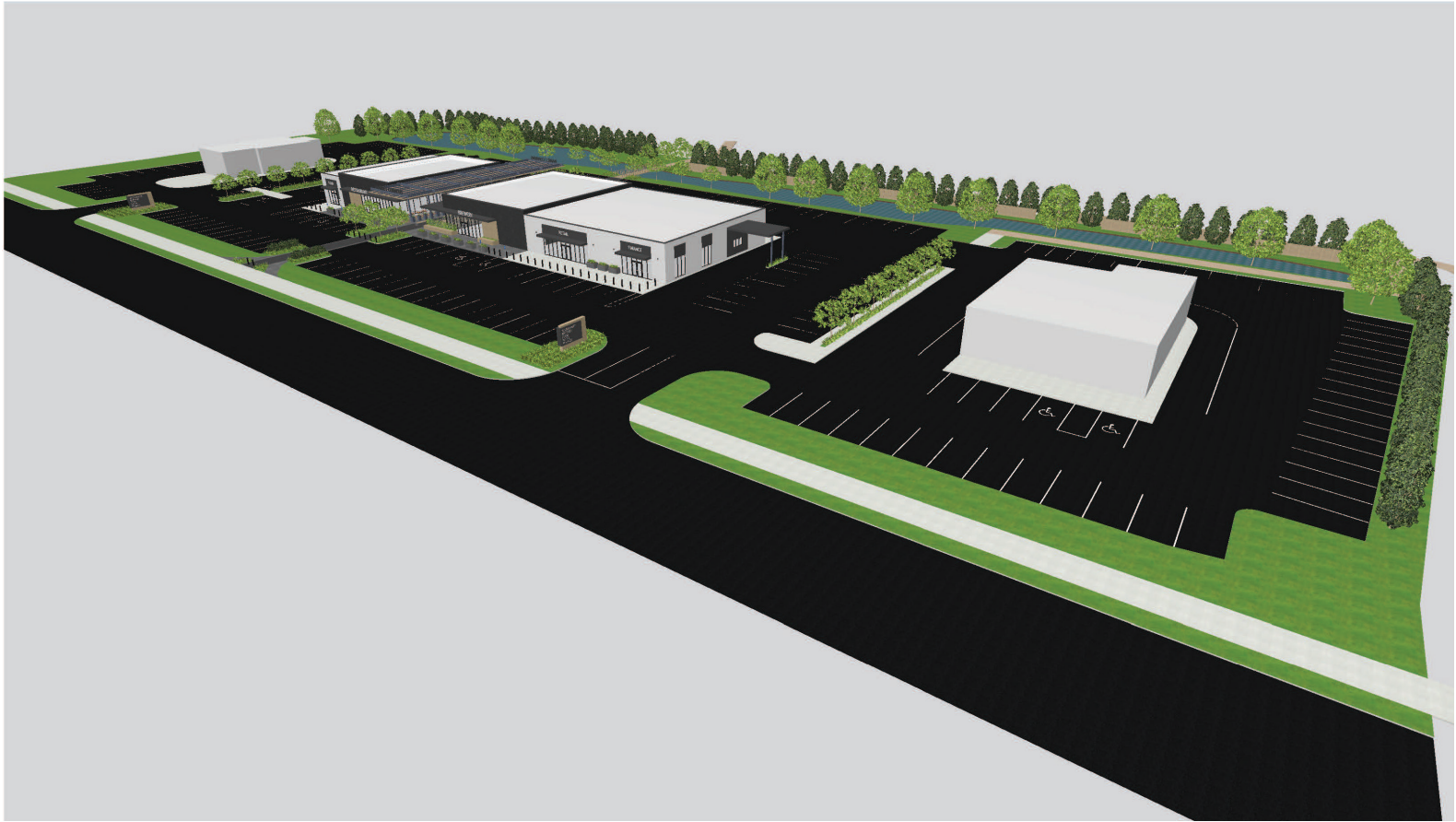


NO WARRANTY OR REPRESENTATION, EXPRESS OR IMPLIED, IS MADE AS TO THE ACCURACY OF THE INFORMATION CONTAINED HEREIN, AND THE SAME IS SUBMITTED SUBJECT TO ERRORS, OMISSIONS, CHANGE OF PRICE, RENTAL OR OTHER CONDITIONS, PRIOR SALE, LEASE OR FINANCING, OR WITHDRAWAL WITHOUT NOTICE, AND OF ANY SPECIAL LISTING CONDITIONS IMPOSED BY OUR PRINCIPALS NO WARRANTIES OR REPRESENTATIONS ARE MADE AS TO THE CONDITION OF THE PROPERTY OR ANY HAZARDS CONTAINED THEREIN ARE ANY TO BE IMPLIED.



Commercial Land Built to Suit or Lease

NORTH MARKET STREET. NORTH CANTON, OH



Jake Miller
O: 614.412.9400
M: 614.256.7385
jmiller@aaltmanco.com

Harrison Zoldan
O: 614.412.9400
hzoldan@aaltmanco.com

IF YOU ARE SUCCESSFUL, WE ARE SUCCESSFUL™



NO WARRANTY OR REPRESENTATION, EXPRESS OR IMPLIED, IS MADE AS TO THE ACCURACY OF THE INFORMATION CONTAINED HEREIN, AND THE SAME IS SUBMITTED SUBJECT TO ERRORS, OMISSIONS, CHANGE OF PRICE, RENTAL OR OTHER CONDITIONS, PRIOR SALE, LEASE OR FINANCING, OR WITHDRAWAL WITHOUT NOTICE, AND OF ANY SPECIAL LISTING CONDITIONS IMPOSED BY OUR PRINCIPALS NO WARRANTIES OR REPRESENTATIONS ARE MADE AS TO THE CONDITION OF THE PROPERTY OR ANY HAZARDS CONTAINED THEREIN ARE ANY TO BE IMPLIED.



Commercial Land Built to Suit or Lease

NORTH MARKET STREET. NORTH CANTON, OH



Jake Miller
O: 614.412.9400
M: 614.256.7385
jmiller@aaltmanco.com

Harrison Zoldan
O: 614.412.9400
hzoldan@aaltmanco.com

IF YOU ARE SUCCESSFUL, WE ARE SUCCESSFUL™



NO WARRANTY OR REPRESENTATION, EXPRESS OR IMPLIED, IS MADE AS TO THE ACCURACY OF THE INFORMATION CONTAINED HEREIN, AND THE SAME IS SUBMITTED SUBJECT TO ERRORS, OMISSIONS, CHANGE OF PRICE, RENTAL OR OTHER CONDITIONS, PRIOR SALE, LEASE OR FINANCING, OR WITHDRAWAL WITHOUT NOTICE, AND OF ANY SPECIAL LISTING CONDITIONS IMPOSED BY OUR PRINCIPALS NO WARRANTIES OR REPRESENTATIONS ARE MADE AS TO THE CONDITION OF THE PROPERTY OR ANY HAZARDS CONTAINED THEREIN ARE ANY TO BE IMPLIED.